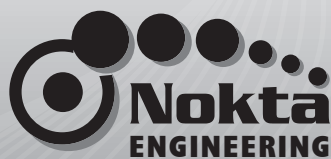


RS PinPointer



www.noktaengineering.com

QUICK GUIDE

INTRODUCTION

Thank you for choosing and purchasing our Nokta RS Pinpointer.

Nokta RS Pinpointer is a hand-held metal detector designed to pinpoint targets detected by conventional metal detectors.

WARNINGS and REMINDERS

Do not expose the device to very hot (for example, inside a hot car) or cold conditions for extended periods of time.

RS Pinpointer is not a digging tool. Do not use it for digging or extracting stones or metals.

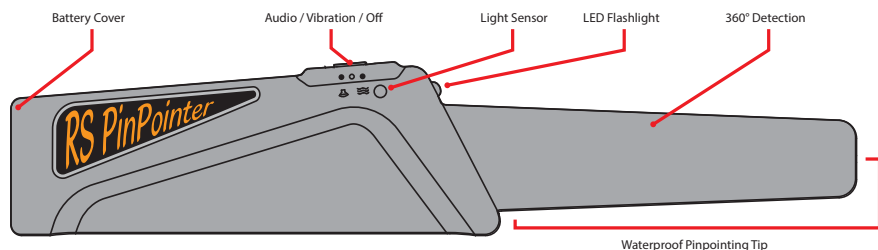
Only the end of the probe is waterproof. Do not immerse the control box in water; do not expose the device to extreme humid conditions.

Do not use the device to locate power lines. Using the device near power lines may cause harm to the device.

Always keep the device off when not in use. This will help increase battery life and device performance.

Sudden changes in ambient temperature can drastically affect the performance of the device. Therefore, it is recommended not to use the device immediately after sudden temperature changes but to wait for approximately 10 minutes.

Audio alert consumes less battery power than vibration alert. Using the audio alert when possible will extend battery life.



FCC STATEMENT: This device complies with Part 15 of the FCC Rules. Operation is subject to the following two conditions: (1) this device may not cause harmful interference, and (2) this device must accept any interference received, including interference that may cause undesired operation.



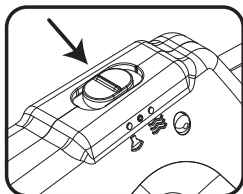
For Consumers within the European Union: Do not dispose of this equipment in general household waste. The crossed wheeled bin symbol on this equipment indicates this unit should not be disposed of in general household waste, but recycled in compliance with local government regulations and environmental requirements.

OPERATING INSTRUCTIONS

Battery: To open the battery compartment, place your thumb on the recess, press down and slide forward. Insert the supplied 9V battery paying attention to the plus (+) and minus (-) poles. If the battery is inserted in the wrong direction, the battery cover will not close.

Low Battery Life Alert: When the battery is low, the device will sound 3 beeps at start up and will continue working until the battery dies.

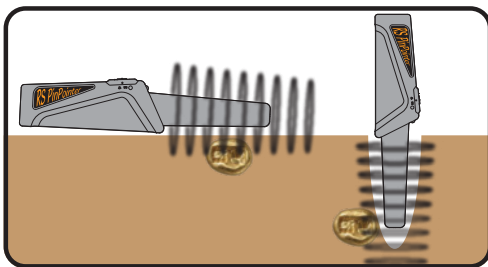
Turning On the Device: Before turning on the device, hold the device away from metallic objects including your watch and jewelry.



To turn on the device, press and release the push button once. The LED will blink once, a long beep will be heard and the device will start in the audio mode. To use the device in the vibration mode, press and release the button again. The device will indicate the mode change with a short beep and vibration.

Audio or Vibration Alert: To switch between the modes, press and release the push button once. When the device detects metal, it will produce an audio or vibration alert according to your mode selection. The rate of the pulsing audio or vibrations will increase as the device gets closer to the metallic object and it will decrease as the device is moved away.

360° Detection: RS Pinpointer's detection area is from the end of the probe to the beginning of the hand-held part and it offers 360° detection. This allows you to easily locate metals in a hole. It also enables you to quickly scan a larger area by holding the RS Pinpointer on its side, flat against any surface and find your target.



LED Flashlight: LED flashlight will light up automatically in the dark. Except in very bright environments, you can also activate the LED flashlight by covering the light sensor on the device with your finger.

Turning Off the Device: To turn the device off, press and hold the push button for a few seconds. The device will produce 6 short beeps and turn off. Always keep the device off when not in use.

Belt Clip Case: When you are not using the RS Pinpointer, you can put it in its case and attach it to your belt or waistband so that you can carry it around securely.

LIMITED WARRANTY: Nokta Engineering warrants to the end-user customer that this product will be free from defects in material and workmanship for a period of 2 years from the date of purchase (excluding the battery & case). Nokta Engineering's limited warranty covers only those defects that arise as a result of normal use of the product in accordance with Nokta Engineering's printed instructions and does not cover any other problems, including those that arise as a result of accident, misuse, negligent act or improper maintenance. The customer must return any defective device to Nokta Engineering or to one of its authorized dealers with freight prepaid. If Nokta Engineering receives, during the applicable warranty period, notice of a defect which is covered by Nokta Engineering's warranty, Nokta Engineering shall either repair or replace the product, at its sole discretion.

MANUFACTURER

Name	: NOKTA ENGINEERING
Address	: EMEK MAH. SIVATYOLU CAD. SAKIZ SOK. NO:4/1-2
City / Country	: SANCaktepe - ISTANBUL / TURKEY
Phone / Fax	: +90 (216) 415 56 86 / +90 (216) 415 63 43

PRODUCT

Brand	: NOKTA	AUTHORIZED SIGNATURE / SEAL
Model	: RS PinPointer	
Product ID / Serial Number	:	

DISTRIBUTER / DEALER

Name	:
Address	:
City / Country	:
Phone / Fax	:
Invoice Date	:
Invoice Number	:
Signature / Seal	: